

You are here: [Home](#) > [Products](#) > [Triton](#) >



Aspire Triton 2

Aspire proudly presents our all new Triton 2 tank system. This tank brings you adjustable airflow control that will allow the user to really dial in on their desired airflow setting. The Triton 2 can be easily disassembled for easy cleaning. With the variety of coils available for the Triton 2 tank system you will surely be able to enjoy any style of vaping you like. So no matter if you want to mouth to lung or go straight to lung the Triton 2's airflow control and coil selection has you covered. Combine this with a convenient top fill method and you have a truly variable tank system.



Tank dimensions

Drip tip dimensions



- 67mm height
- 22.5mm width
- Stainless steel
- Pyrex tube
- 3.0ml capacity

- Standard 510 drip tip
- Stainless steel
- 11.5mm width
- 14mm height

Triton 2 drip tip system

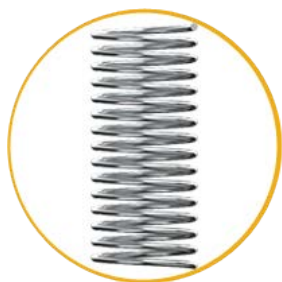


- Two notched fins act as a heat sink, to dissipate heat away from the drip tip, and also as a grip for unscrewing the Triton 2's drip tip system

Triton 2 coils



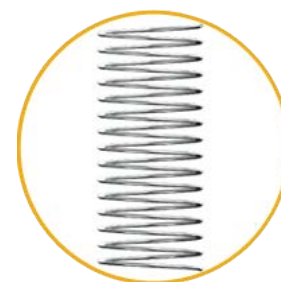
- We use Japanese organic cotton as our wicking material, ensuring a full bodied flavor from all of your favorite ejuices



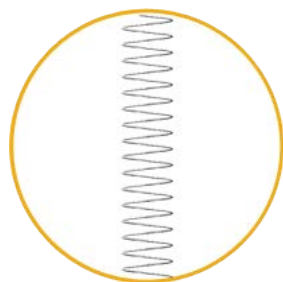
0.3 ohm
(rated at 45-55 watts)
Φ0.9mm
Spacing:0.5mm



• All new surgical grade (316L) stainless steel tube filament, suitable for direct to lung style vaping, encoded with a black gasket

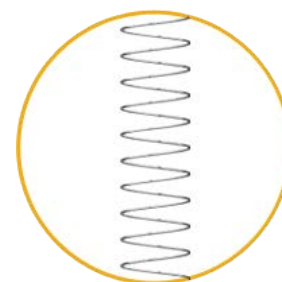


0.4 ohm
(rated at 25-30 watts)
Φ0.5mm
Spacing:1mm



1.8 ohm
(rated at 10-13 watts)
Φ0.18mm
Spacing:1.3mm

•Using traditional kanthal this coil is suitable for mouth to lung vaping, encoded with a blue gasket



0.15 ohm
(NI200)
Φ0.18mm
Spacing:1.3mm

• Temperature Control Coil





0.5 ohm
(rated at 40-45 watts)
Φ0.4mm
Spacing:6.2mm

•0.5 ohm Clapton coils. With a kanthal base wire and a kanthal wrap these coils provide more surface area compared to standard coil designs. This results in greater vapor production which gives a noticeable increase in flavor.

Coils Assembly



•With the bottom hardware removed from the tank system simply screw in your replacement atomizer

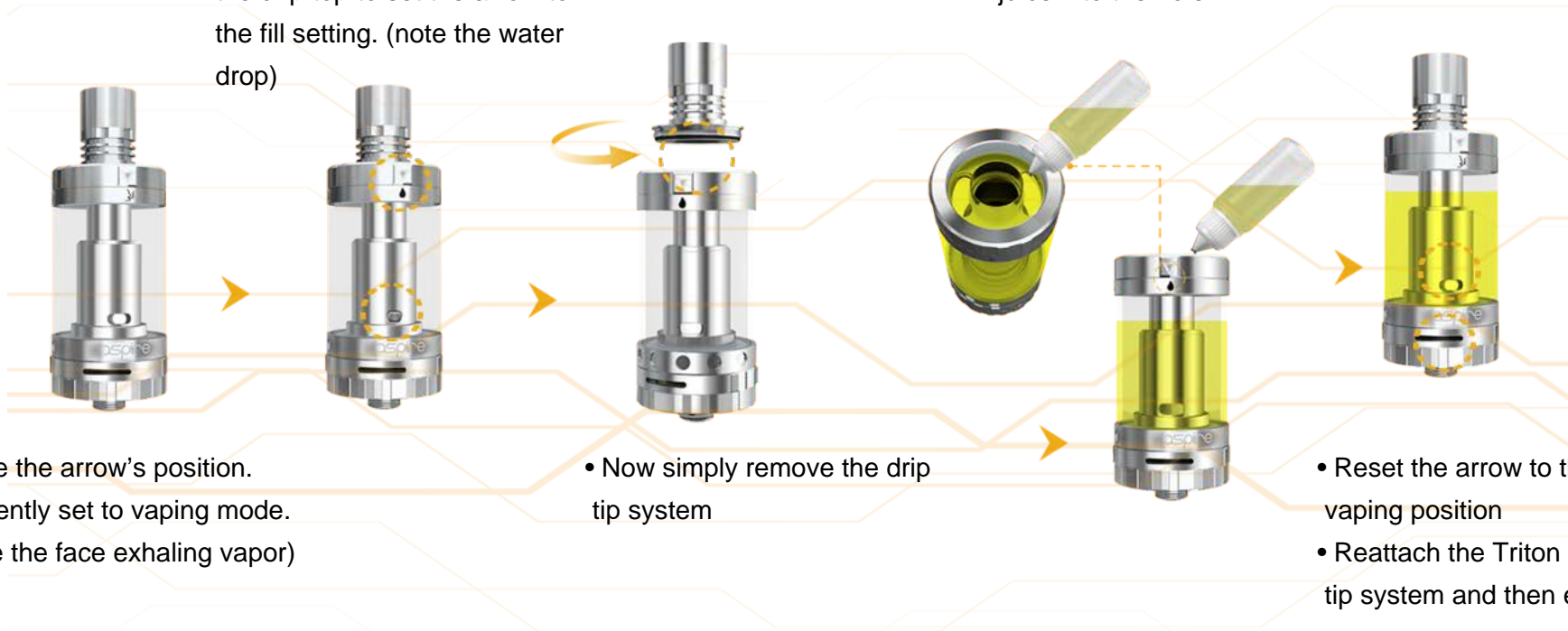
Top fill instructions

• Simply twist from the base of

• Simply squirt your favorite

the drip top to set the arrow to the fill setting. (note the water drop)

juice into the hole



- Note the arrow's position. Currently set to vaping mode. (note the face exhaling vapor)

- Now simply remove the drip tip system

- Reset the arrow to the vaping position
- Reattach the Triton 2's drip tip system and then enjoy

[About us](#) | [Products](#) | [Videos](#) | [Download](#)



©2014 ASPIRE. ALL RIGHTS RESERVED
 Electronic cigarette, Aspire clearomizer, Tank.E-cigarette brand.Aspire nautilus

